



PERTH
BAGPIPER

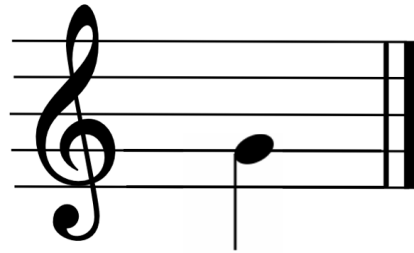
Beginner Course 1

Basic Theory

Finger Positions



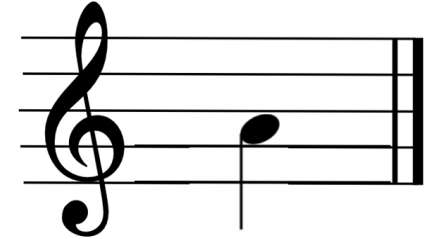
Low G



Low G – Close the chanter



Low A

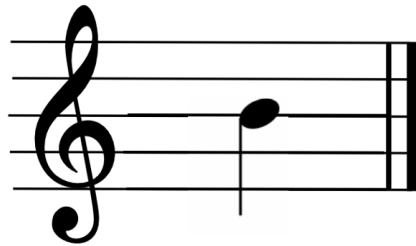


Low A – Cuppa tea?

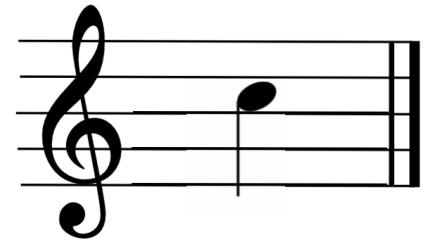
Finger Positions



B



C



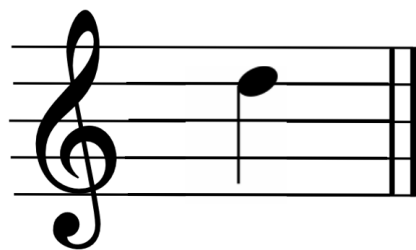
B – Oh, 2 Be or not 2 Be

C – The bridge

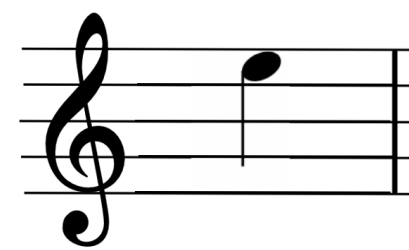
Finger Positions



D



E



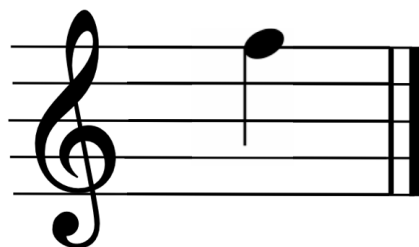
D – Throw it away

E – Cuppa tea for 2?

Finger Positions



F



F – Pinch



High G

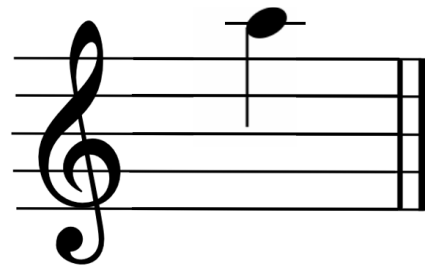


High G – Open high

Finger Positions



High A



High A – The wedding touch

- Remembering the fingering positions
- **Low G** – Close the chanter
- **Low A** – Cuppa tea?
- **B** – Oh, 2 Be or not 2 Be
- **C** – The bridge
- **D** – Throw it away
- **E** – Cuppa tea for 2?
- **F** – Pinch
- **High G** – Open high
- **High A** – The wedding touch

Finger Patterns

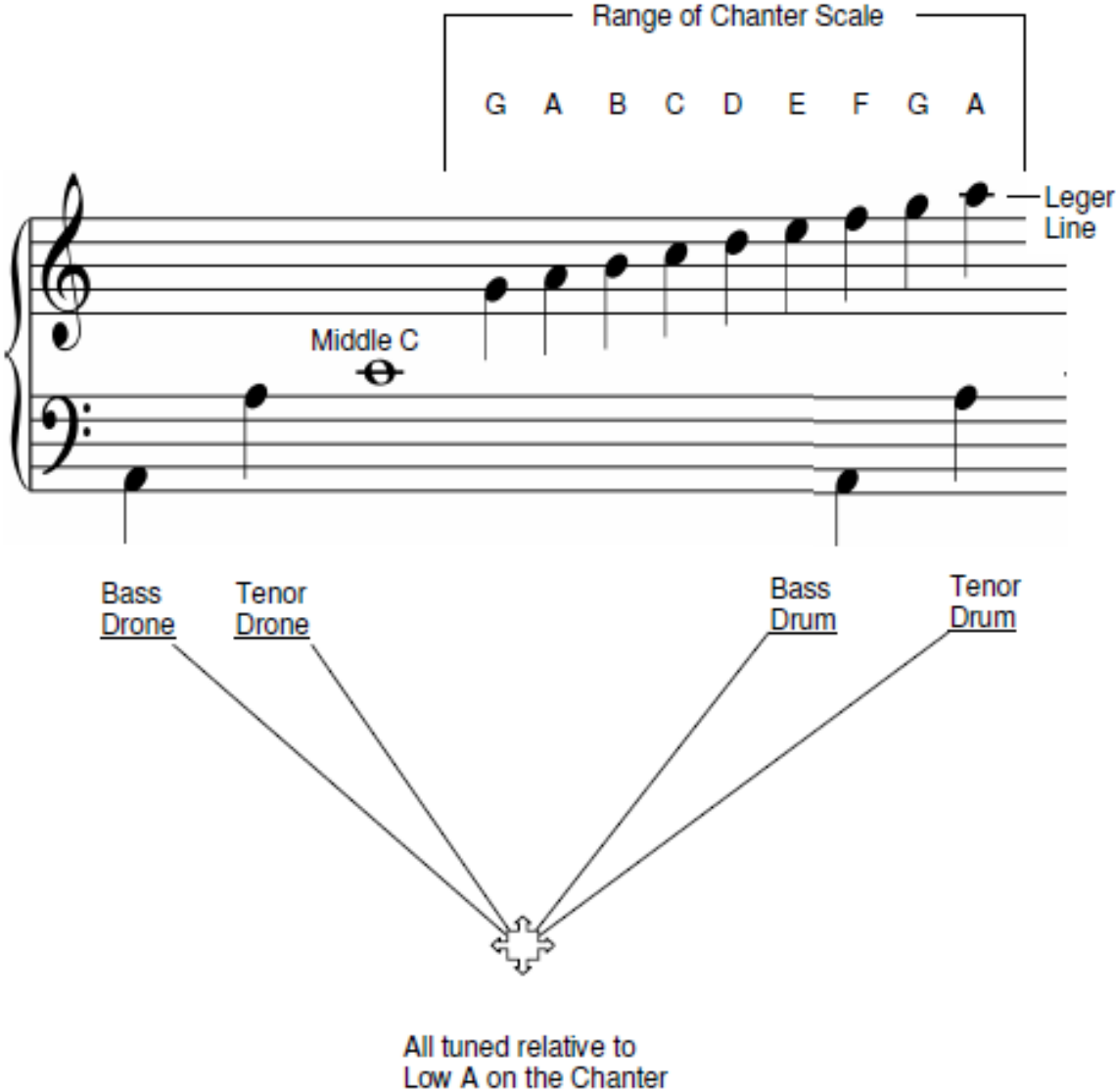


G A B C D E F G A

- Use thumb and 1st three fingers of left hand
- Place right hand below left, using all four fingers
- Lay fingers flat across holes (do not use fingertips)

○ = OPEN HOLE
● = CLOSED HOLE

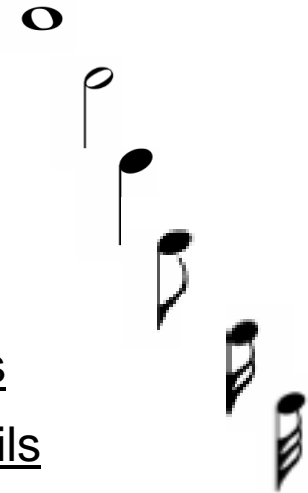
The Great Staff



Note Duration

- Note duration is the length of a musical Sound
- Six note shapes or symbols

• Semibreve or	Whole note -	Hollow circle
• Minim or	Half note -	<u>Semibreve</u> with a <u>stem</u>
• Crotchet or	Quarter note -	<u>Minim</u> with filled circle
• Quaver or	Eighth note -	<u>Crotchet</u> with one <u>beam</u> or <u>tail</u>
• Semi-quaver or	Sixteenth note -	<u>Crotchet</u> with two <u>beams</u> or <u>tails</u>
• Demi-semi-quaver or	Thirty-second note -	<u>Crotchet</u> with three <u>beams</u> or <u>tails</u>



Note Duration

THE SEMIBREVE
(Whole Note)



Is equal to

Two Minims
(Half note)



Or

Four Crotchets
(Quarter note)



Or

Eight Quavers
(Eighth Notes)



Or

Sixteen
Semiquavers
(Sixteenth Notes)



Or

Thirty-Two Demi-
Semi Quavers
(Thirty second note)



All basic notes are referred to as SIMPLE NOTES.